

## **Thermal Printer Series**

### **SUP58T2**

# **manual**



VERSION 1.1.02

August 2010

Copyright of this manual remains with Sunphor, reproduction of any section of this manual is prohibited without prior written permission of Sunphor.

While all care has been taken to ensure the accuracy of this user manual, the continual development of this product may reflect some inaccuracies.

Sunphor takes no responsibility for the inaccuracies and will endeavour to update this user manual periodically. Further assistance can be supplied by your local dealer..

**Notes**

1. The printer is to be installed on a flat dry surface.
2. Do not store the printer in hot and humid conditions.
3. The printer's power adapter is to be connected to a stable power supply of 240-Volts, please do not use other devices on the same power socket, to avoid voltage fluctuations.
4. Avoid water or conductive material (for example: metal). If water is present on the surface please turn off the power immediately.
5. Please ensure that a thermal paper roll is always inserted in the printer to avoid damaging the printing roller and the printer head.
6. If you do not intend to use the printer for a long time, please disconnect the printer's power adapter.
7. Please ensure that your printer is serviced and repaired by a qualified technician. No responsibility is taken for misuse and/or non-qualified servicing.
8. The power adapter that comes with this printers is specifically designed to be only used with the printer, please do not use an alternative power adapter.
9. In order to ensure print quality and longevity of your printer, please ensure that only quality thermal paper rolls are used.
10. Please make sure the printer power is turned off before plugging in the power cord or the data cable,.
11. Please keep this manual in a safe place, where it can be accessed easily and used for your reference.

**Application Area**

- ✧ Electronic Cash Register POS System Docket Printing
- ✧ Electronic Funds Transfer EFTPOS Systems Docket Printing
- ✧ All retails outlet tax invoice, and lay-by (lay away) dockets
- ✧ All accounting reports in 80mm format
- ✧ Measuring instrument information in 80mm format
- ✧ All other reports in 80mm format Tax, single-bill printing

**Main Feature**

- ✧ Print high-quality, low cost
- ✧ Low-noise, high-speed printing
- ✧ Supports cash drawer release
- ✧ Small and lightweight
- ✧ Easy paper loading, ease of use and maintenance
- ✧ Built-in data buffer (when printing can receive print data)
- ✧ Communication interface optional parallel port or serial port
- ✧ Enlarged character printing, adjustable characters for line spacing
- ✧ Supports different densities bitmap and downloaded graphics
- ✧ Supports faster bitmap printing
- ✧ The driver printing (mode), implements and calls from the inbuilt word-bank for high-speed printing
- ✧ Low power consumption, Low operating costs (no ribbons or ink cartridges)
- ✧ Compatible ESC / POS print commands set

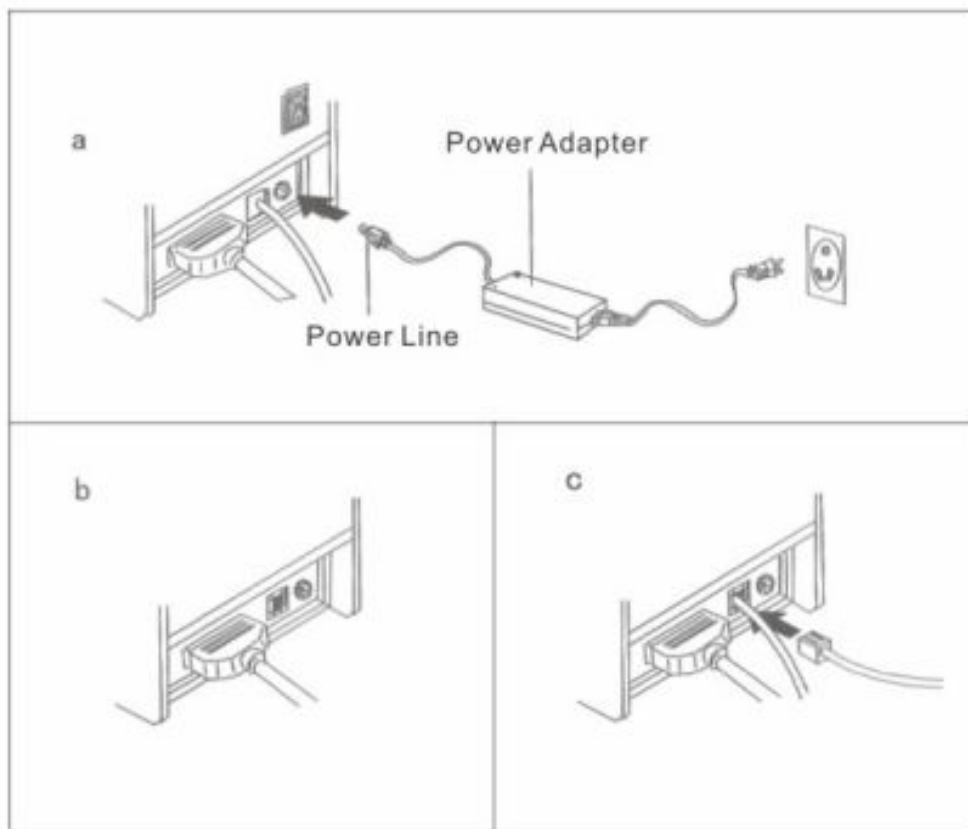
**Technical Parameters:**

Print method	Line thermal
Print speed	90 mm / sec
Paper width	58mm
Print Density	384 dot/line
Characters size	ANK Character, Font: A: 12*24dots, 1.5(W)*3.0(H) mm Simplified/Traditional:24*24dots,3.0(W)*3.0(H)mm
Print Command	Compatible ESC/POS Command
Interface Type	USB/Serial/Parallel
Reliability	100KM
Barcode Type	JAN13(EAN13)/JAN8(EAN8)/CODE39
Printing paper thick	0.06-0.08MM
Adapter Voltage Input	AC 110B/220V, 50-60Hz

Adapter Voltage output	DC 12V/3A
Printer Input Voltage	DC 12V/3A
Cashbox Control	DC 12-24V/1A
Working Temperature	0-45°C, Humidity: 10-80%
Saving Temperature	-10-60°C, Humidity: 10-90%

**Connection the printer (Switch off first)**

- a. Connect the power adapter cable to the printer power interface
- b. Connect the data cable from the PC to the printer port interface
- c. Connect the cashdrawer cable to the printer's cashdrawer interface



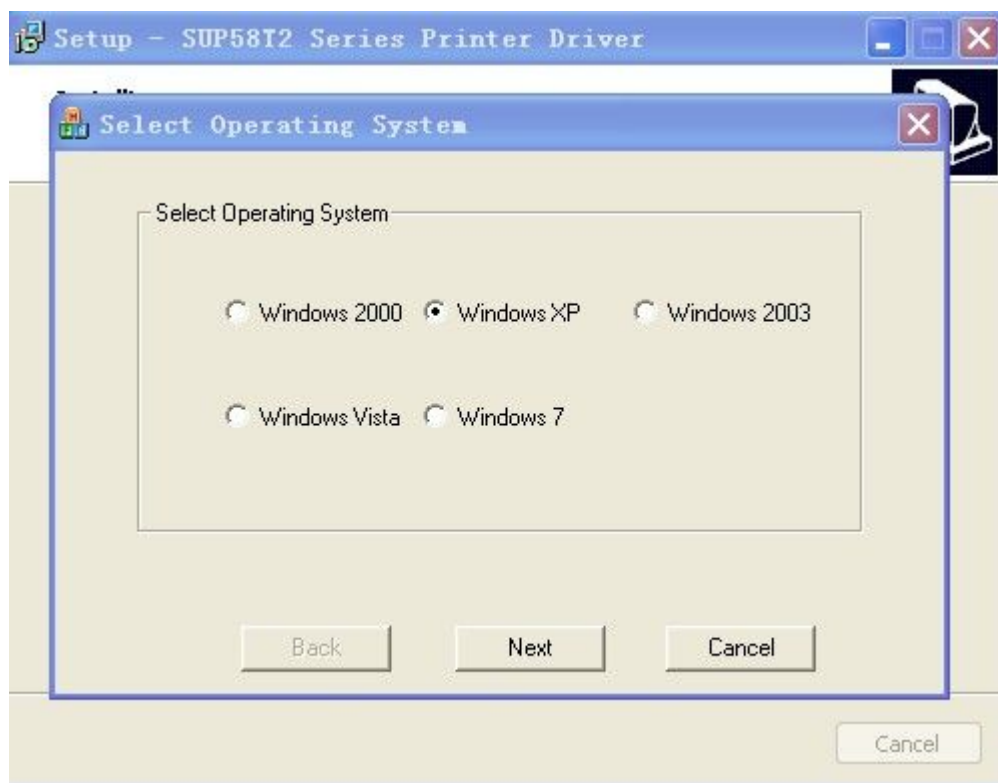
## Installation of paper roll

- a. Open the printer cover by pressing the release button on the front right-side of the printer.
- b. Insert the thermal paper roll and note the direction in the image, to ensure the roll is correctly inserted .
- c. Pull a small amount of the thermal paper roll in the direction of the paper cutter until it is showing on the outside of the printer, before closing the lid.

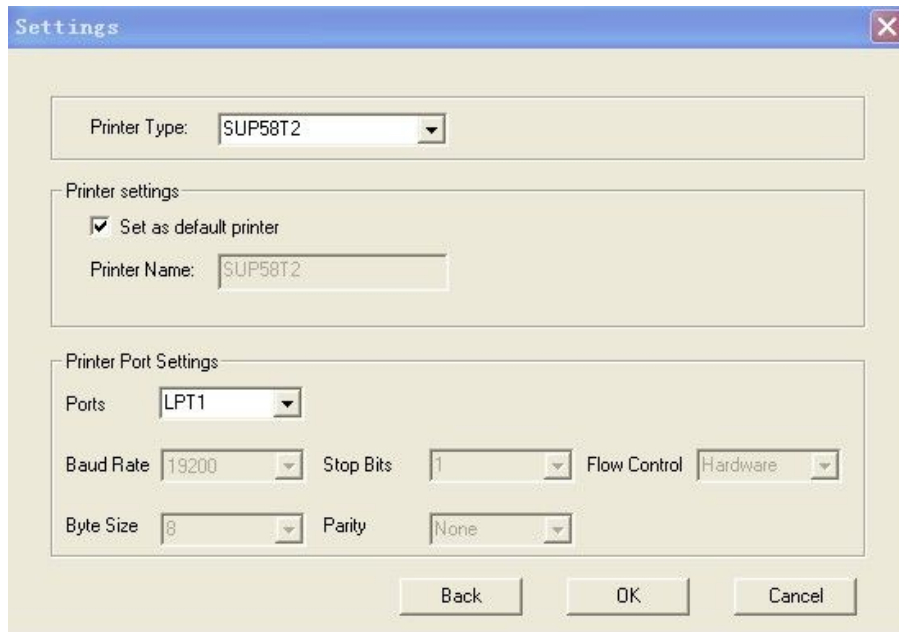
## Installation of Printer driver

SUP58T2 series printer driver: I. direct to install the diver procedures on WIN9X/2K/NT/XP; II. using serial and parallel direct to drive. III. Run the driver installation in diver CD.

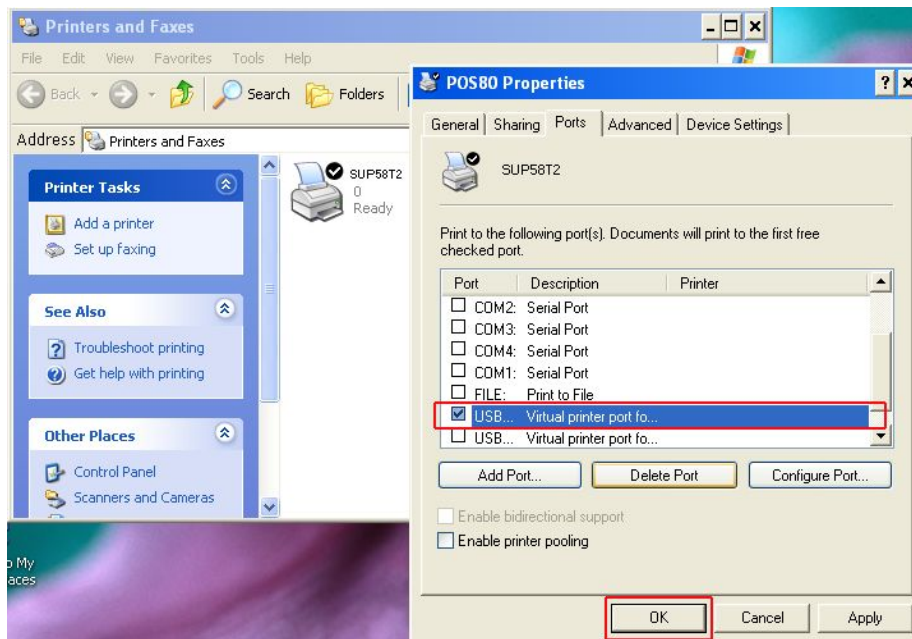
1. Add a printer on “printer and scan” panel, and specify the driver files to drive disk. Just call the Print command in the program can begin print. upon this way, actually used by WINDOWS own print program, put the character into a pattern dot matrix method to print
2. Serial port and Parallel port direct drive  
Upon this way, no need to install supplier driver, the data(by byte) just needs to be sent directly to the port by command .The printer will print the character by line printing form instead of page form after transferring using internal font. It is more convenient.
3. Insert the driver CD open “Sup58T2 driver” directory, Double-click the “**setup.exe**”. Select your operating system. Click next to continue the installation. See the following image:



4. Select Printer Type "SUP58T2 Series" and click "OK" to continue the installation. See the following image:



5. Click **Start> Control Panel> Printers and faxes>** to check the new printers installed successfully. Right click the new printer "SUP58T2". Open "Properties" to select the appropriate "Port" (USB, Serial or Parallel). Finished the installation. See the following image:



**Self-test of the Printer operation**

1. Make sure the printer is turned off, and paper has been installed correctly.
2. At the same time of turning the power button on. press and hold the “FEED” button for about 3”, when you release it the printer will start print a self-test page.

**Clean of printer**

When the printer has the following conditions, you should clean the print-head:

1. The printer does not print clearly and the thermal paper is Ok
2. The page-test printing is not crisp and clear
3. Paper feed is noisy

**Printer cleaning steps are as follows:**

1. Turn of the power to the printer and open the top cover. Remove the thermal paper roll.
2. If the printer was just printing then wait for the print head to cool down.
3. With a soft cotton cloth dipped in ethanol (please make sure there is no dripping), wipe the thermal printer head gently and remove any dust or stains.
4. Wait for the complete evaporation of any ethanol, then place the Thermal paper roll back in the printer and close the top cover, then print a test docket.

**Notice**

1. When doing maintenance on the printer, make sure the power is turned off.
2. Don't allow your hands or any metal object to touch the surface of the printer head. Beware that metal tools can damage the rubber roll, the sensor and other components in the printer.
3. Don't use any solvents on the components of the printer.
4. Do not turn on the printer until all cleaning agents are fully dried.